

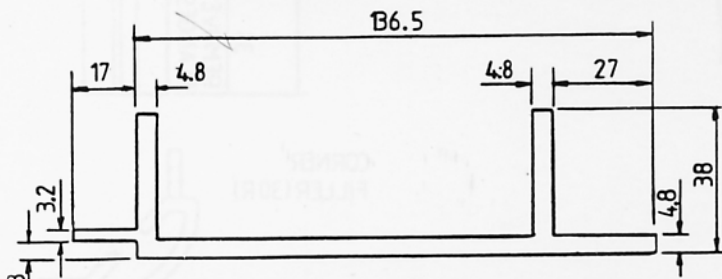


DLM 1045 BASE MEMBER

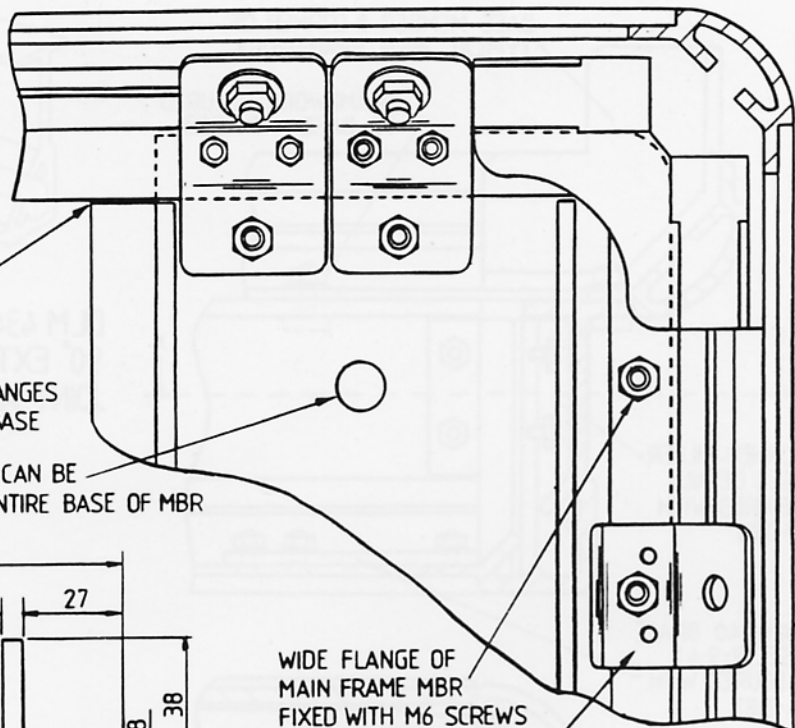
CUT BACK FLANGE BY 18

2-DLH 395 BRACKETS, EACH
FIXED WITH 1-DB1, 2-M5 CSK
SCREWS & NUTS THROUGH FLANGES
& 1-M6 CSK SCREW THROUGH BASE

HOLE FOR SHOCK MOUNT BOLT CAN BE
POSITIONED AS REQ'D OVER ENTIRE BASE OF MBR



MATERIAL-AL ALLOY 6082TF WEIGHT 2.46 KG/M

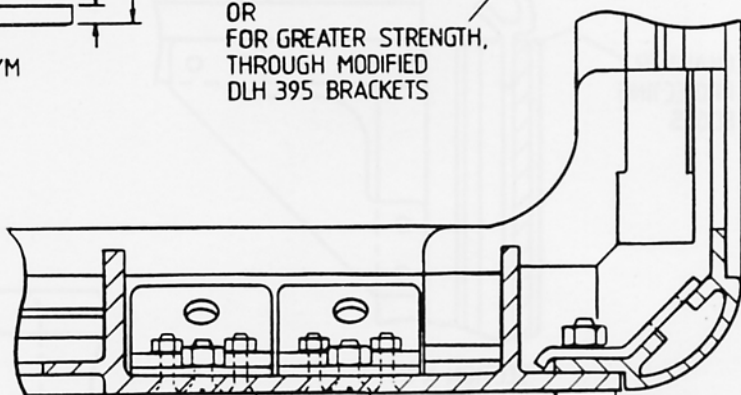


WIDE FLANGE OF
MAIN FRAME MBR
FIXED WITH M6 SCREWS
THROUGH BASE
OR
FOR GREATER STRENGTH,
THROUGH MODIFIED
DLH 395 BRACKETS

SEE 4-4-3 ON SELECTING
POSITIONS FOR SHOCK
MOUNTS

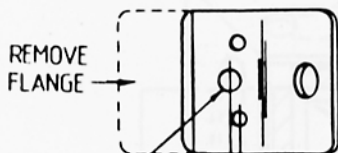
BS 4278 (on Eye-
bolts) contains a warning
on mixing threads when
using eyebolts, a danger
that has increased by the
introduction of metric
threads. In some cases
pitch centres are
identical and the presence
of paint can give a false
sense of security.

It is therefore
recommended that the
thread size be perm-
anently engraved
alongside each
eye bolt hole.



TYPICAL SHOCK
MOUNTING

HEX HEAD SCREWS
AND LARGE DIA
HEAVY GAUGE
WASHERS ARE
AN ALTERNATIVE TO
CSK SCREWS



REMOVE
FLANGE

DRILL $\phi 6.5$

MODIFICATIONS TO DLH 395

